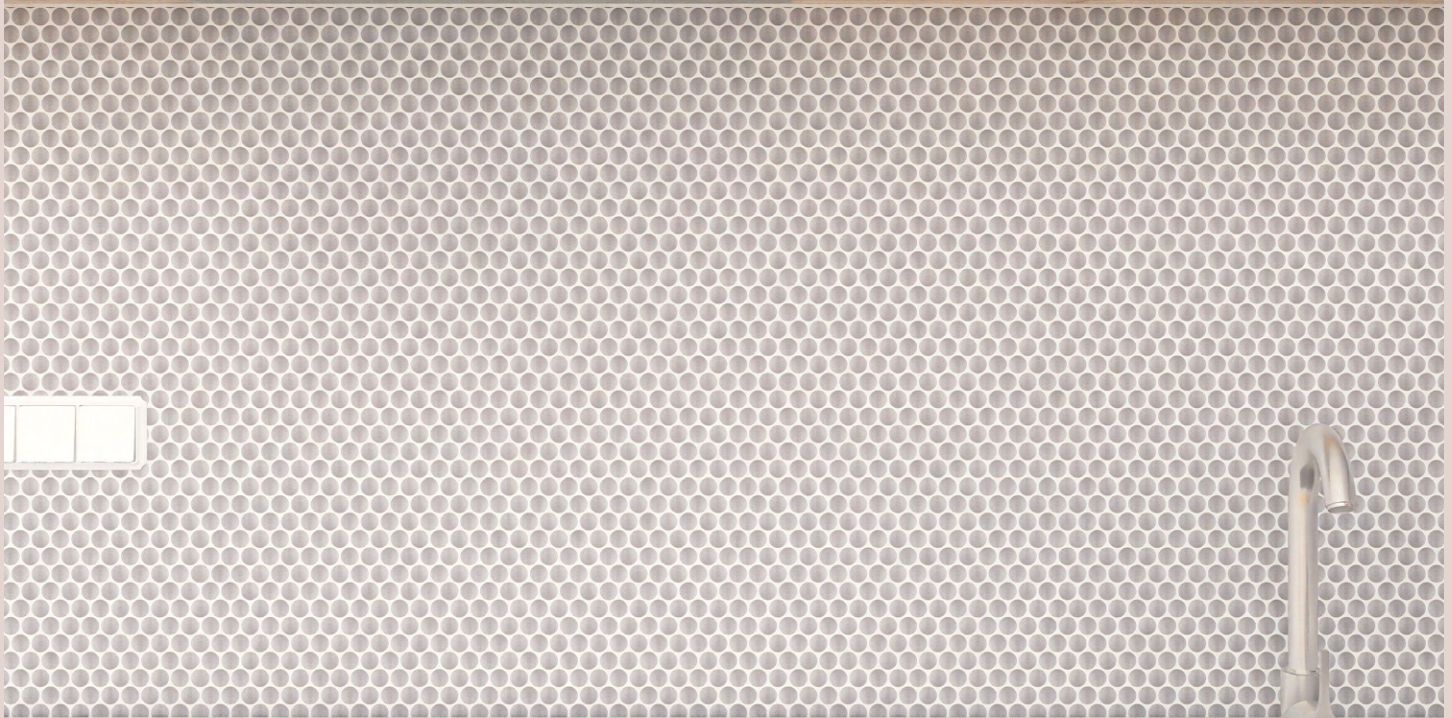


UMORE



CLASSICO

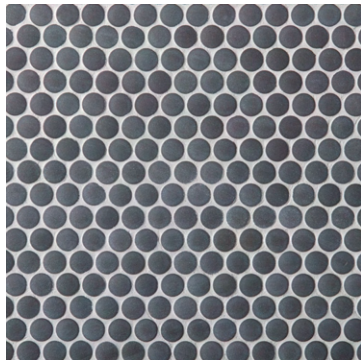
(2 OF 5) PENNY MOSAICS



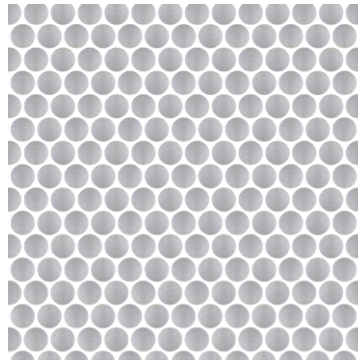
1" PENNY MOSAICS



WHITE
UMOWHIT2CL1111U

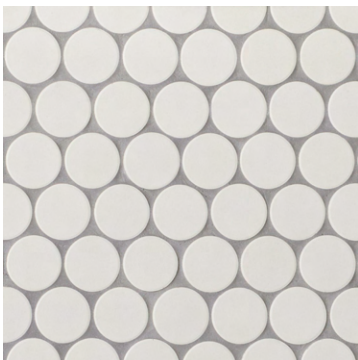


GRAY
UMOGRAY2CL1111U

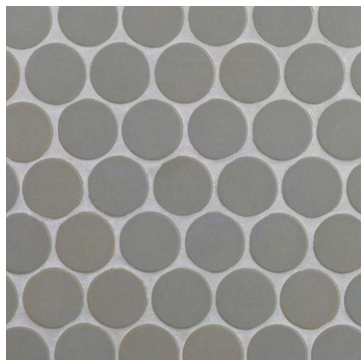


LIGHT GRAY
UMOLIGR2CL1111U

2" PENNY MOSAICS



WHITE
UMOWHIT2CL1112U




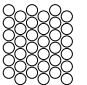
GRAY
UMOGRAY2CL1112U

CLASSICO

(2 OF 5) PENNY MOSAICS

UMORE

SIZES

	Nominal Size	Actual Size	Thickness	Color	Finish	Sq. Ft. / Carton	Pcs / Carton
	11"x11" Penny Mosaic	10.70"x10.70" Sheet 0.75" Chip	0.22"	White, Gray, Light Gray	Unglazed	8.91 sqft	11
	11"x12" Penny Mosaic	10.40"x11.80" Sheet 2" Chip	0.22"	White, Gray	Unglazed	8.60 sqft	10

PRODUCT INFORMATION

Material	Porcelain
Body Color	Standard
Edge	Pressed
Manufacturing Process	Rear Mesh-Mounted Unglazed
Country of Origin	Thailand

INSTALLATION

Suggested Grout Line Size	1/8", 1/16"
Installation Options	Floor/Wall
Shade Variation	V0 Very Uniform Appearance



PERFORMANCE PROPERTIES

Test	Test Standard	Result
Dynamic Coefficient of Friction	ANSI A137.1-2012 AcuTest™ ANSI/NFSI B101.3-2012	0.54
Water Absorption	ASTM C373-16 ISO 10545-3	Water Resistant (with proper sealant)
PEI Rating	ASTM C1027-09 or ISO 10545-7 (Glazed); ASTM C1243-93 (2015) or ISO 10545-6 (Unglazed)	n/a
Mohs Scratch Hardness	1:Talc 2:Gypsum 3:Calcite 4:Fluorite 5:Apatite 6:Feldspar 7:Quartz 8:Topaz 9:Corundum 10:Diamond	n/a
Breaking Strength	ASTM C648-04 (2014): ≥275 lbf	n/a
Chemical Resistance	ASTM C650	n/a
Freeze Thaw	ASTM C1026	n/a

APPLICATION

Backsplash	✓	Indoor Wall	✓
Shower Wall	✓	Indoor Floor	✓
Shower Floor	✓	Pool Decking	✓
Submerged (Tub)	✓	Submerged (Pool)	✓
Outdoor	✓	Residential/Commercial Use:	✓

NOTES

Product specifications are subject to variation and tolerances within testing or productions and may vary. Variations in appearance, texture, construction, dimensions, performance, and style may occur and should be considered in product selection.

The product specifications listed reflect data from the manufacturer or from laboratory testing performed under specific testing conditions. As such it does not represent all conditions under which the products may be used or subjected.

For information on performance standards and/or suitability please consult the ANSI, ASTM, or Tile Council of North America resources.

