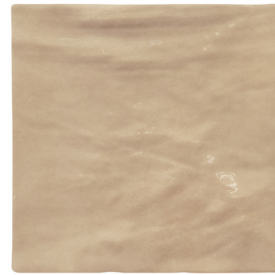
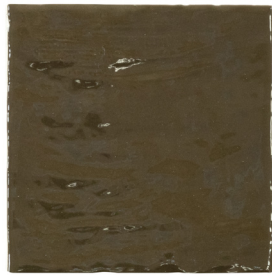
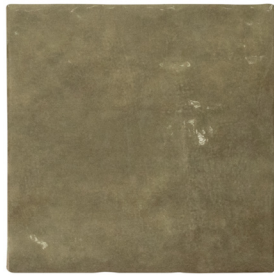


UMORE



SAVONA
CERAMIC WALL TILE



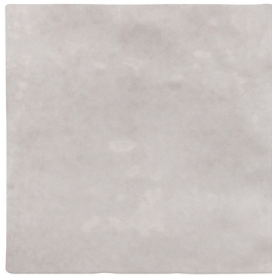
ALABASTER

ARTICHOKE

BRUNO

CREMA

IVORY



JASPER



SAPPHIRE

SHIITAKE

SIENNA

TOPAZ

SIZES


	Nominal Size	Actual Size	Thickness	Color	Finish	Faces	Sq. Ft. / Carton	Pcs / Carton
	2.5"x8"	2.56"x7.87"	8.3mm	Alabaster, Artichoke, Bruno, Crema, Ivory, Jasper, Sapphire, Shiitake, Sienna, Topaz	Gloss	75	5.38 sqft	38
	5"x5"	5.19"x5.19"	8.3mm	Alabaster, Artichoke, Bruno, Crema, Ivory, Jasper, Sapphire, Shiitake, Sienna, Topaz	Gloss	75	10.764 sqft	57

PRODUCT INFORMATION

Material	Ceramic
Body Color	Standard
Edge	Pressed
Manufacturing Process	Inkjet
Country of Origin	Spain

INSTALLATION

Suggested Grout Line Size 1/16" - 3/8"

Installation Options	Wall
Shade Variation	V2 

PERFORMANCE PROPERTIES

Test	Test Standard	Result
Dynamic Coefficient of Friction	ANSI A137.1-2012 AcuTest™ ANSI/NFSI B101.3-2012	>0.42
Water Absorption	ASTM C373-16 ISO 10545-3	<10%
PEI Rating	ASTM C1027-09 or ISO 10545-7 (Glazed); ASTM C1243-93 (2015) or ISO 10545-6 (Unglazed)	n/a
Mohs Scratch Hardness	1:Talc 2:Gypsum 3:Calcite 4:Fluorite 5:Apatite 6:Feldspar 7:Quartz 8:Topaz 9:Corundum 10:Diamond	7
Breaking Strength	ASTM C648-04 (2014): ≥275 lbf	170 lbf
Chemical Resistance	ASTM C650	Class A
Freeze Thaw	ASTM C1026	n/a

APPLICATION

Backsplash	✓	Indoor Wall	✓
Shower Wall	✓	Indoor Floor	✗
Shower Floor	✗	Pool Decking	✗
Submerged (Tub)	✗	Submerged (Pool)	✗
Outdoor	✗	Residential/Commercial Use:	✓

NOTES

Product specifications are subject to variation and tolerances within testing or productions and may vary. Variations in appearance, texture, construction, dimensions, performance, and style may occur and should be considered in product selection.

The product specifications listed reflect data from the manufacturer or from laboratory testing performed under specific testing conditions. As such it does not represent all conditions under which the products may be used or subjected.

For information on performance standards and/or suitability please consult the ANSI, ASTM, or Tile Council of North America resources.

